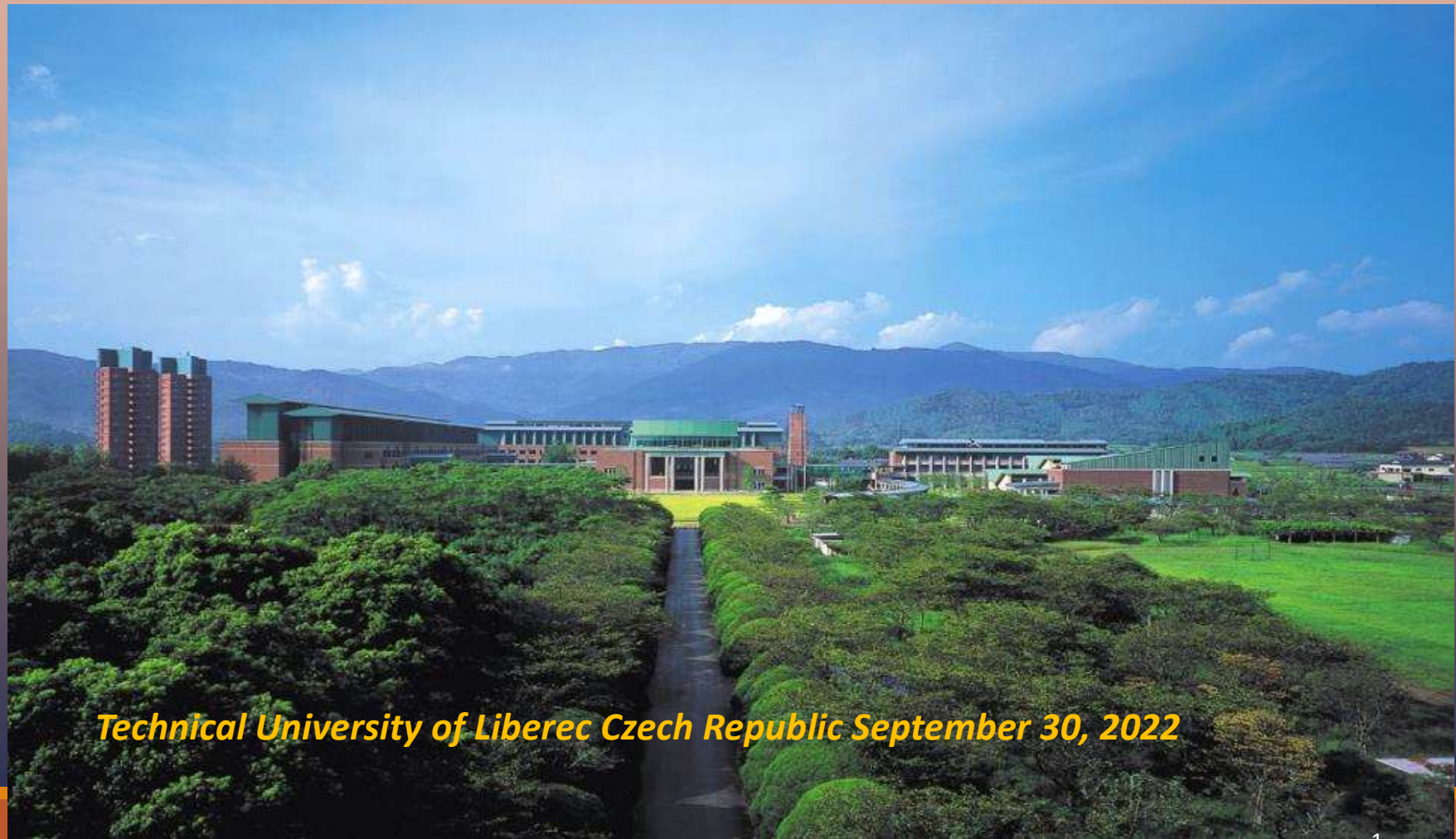


# Kochi University of Technology

## International Programs Introduction

---



*Technical University of Liberec Czech Republic September 30, 2022*

# Greeting from KUT President



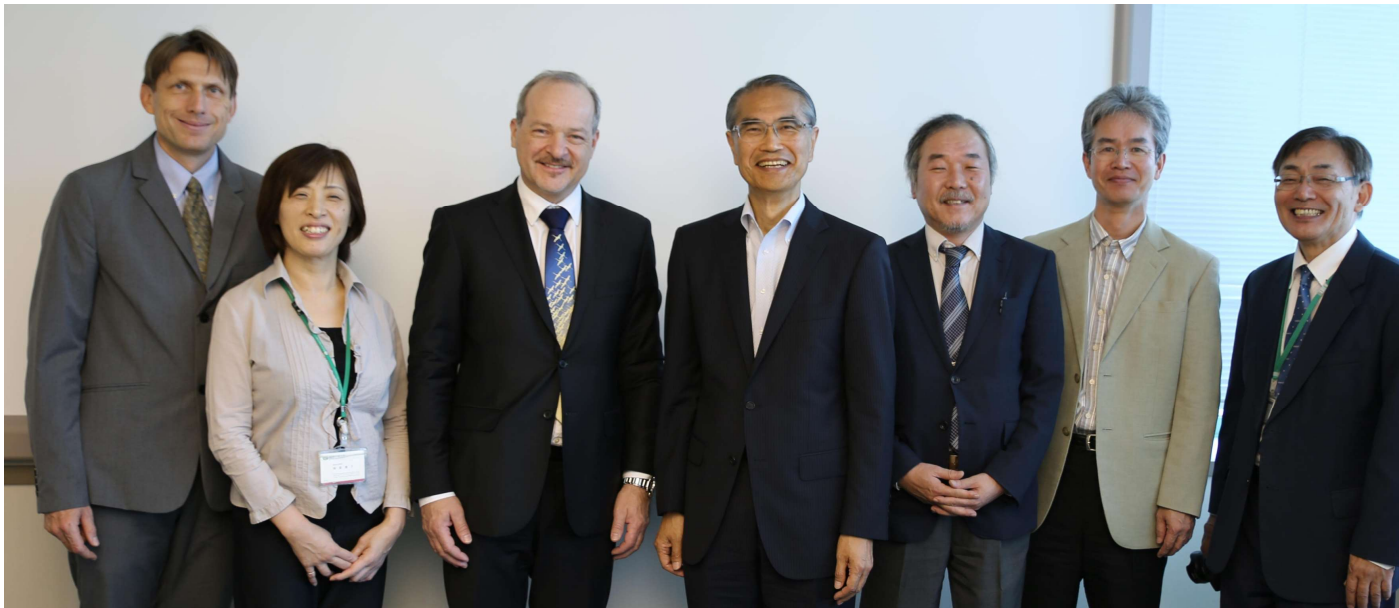
Establish academic relationship between  
Technical University of Liberec  
and Kochi University of Technology

**Welcome to visit Kochi University of Technology!**

President Dr. Masahiko Isobe

## Back ground of our visit

Thanks to this long lasting good relationship with University of Hradec Králové, [Mr. Tomáš Dub](#) the Ambassador Extraordinary and [Mr. Marcel Sauer](#), Head of Commercial and Economic Section, Embassy of the Czech Republic in Japan made their first visit to KUT in 2017.



Mr. Marcel Sauer  
Head of Commercial and  
Economic Section

Mr. Tomas Dub  
The Ambassador  
Extraordinary

Dr. Masahiko Isobe  
The president of  
KUT

## Back ground of our visit

Mr. Martin TOMČO, the Ambassador Extraordinary visited to KUT and paid a courtesy visit to President Masahiko ISOBE after visiting pre-event training camp with Czech delegation to Tokyo Olympic Game in July 2021.



Mr. Martin TOMČO  
The Ambassador  
Extraordinary

After 3 years Covid-19 pandemic, KUT decided to send delegation to University of Hradec Králové and by this opportunity, KUT has a strong intention to explore future academic collaboration possibility with Technical University of Liberec through recommendation from Mr. Martin TOMČO





## THE World University

### Rankings 2021

Japan University ranking:

34th (out of 116 universities)

*“Making KUT a  
world class  
university through  
the pursuit of  
unique  
excellence”*

*Established as a private university in 1997*

*The formation of the public education corporation Kochi University of Technology in 2009*

# Location of KUT







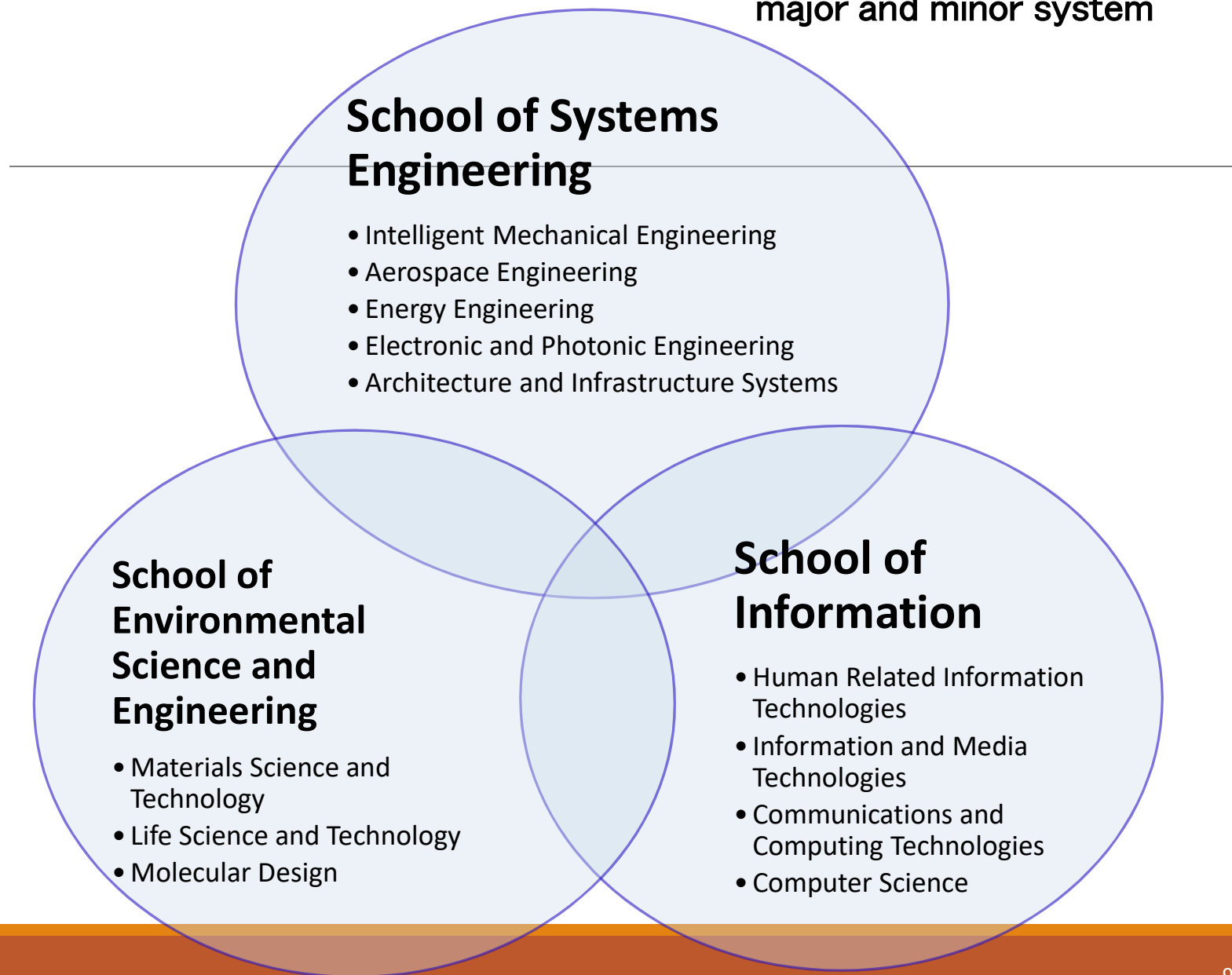






# 3 schools and 12 disciplines in Engineering

major and minor system



# 1 school and 7 disciplines in Economics and Management

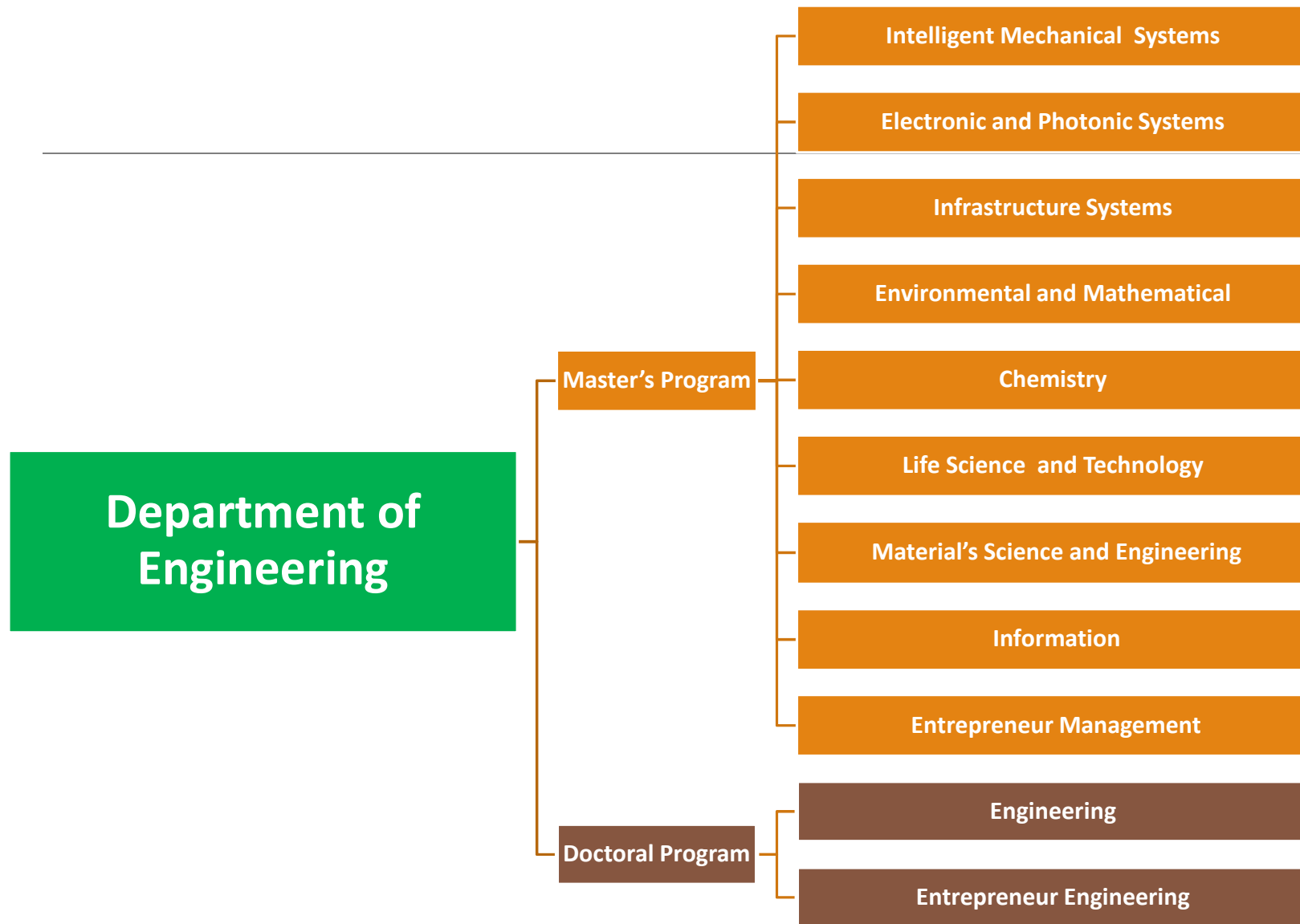
---

## **School of Economics & Management**

- Human Behavioral Sciences
- Economic and Social Design Sciences
- Mathematical Studies in Management and Economics
- Regional and Public System Sciences
- Business Management and Entrepreneur Sciences
- International Studies in Management and Economics
- Sports Studies in Management and Economics



# Graduate School of Engineering



# Research Institute

## Research Center

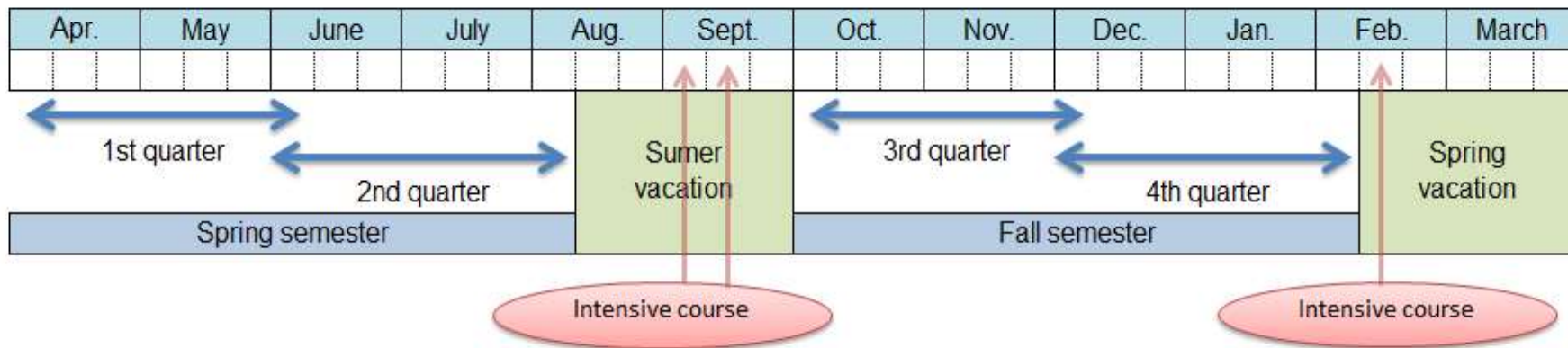
- ▣ Advanced Robotics Research Center
- ▣ Center for Nanotechnology
  - Research Unit for Advanced Functional Materials and Devices
  - Research Unit for Advanced Characterization for Future Materials
- ▣ Research Center for Brain Communication (BrainCom)
- ▣ Research Center for Molecular Design
- ▣ Materials Design Center
- ▣ Center for Human-Engaged Computing (CHEC)
- ▣ Laboratory of Life-cycle Psychology and Neuroscience

## Laboratory

- ▣ Laboratory for Structural Nanochemistry
- ▣ Infrasound Research Laboratory
- ▣ Laboratory for Construction Materials in a Sustainable Society
- ▣ Vision and Affective Science Integrated Research Laboratory



# Academic calendar (Quarter System)



- ◉ Quarter system started at the inception of KUT
- ◉ Students can earn credits each quarter
- ◉ 2<sup>nd</sup> quarter is treated as the “international quarter”

## *Agreements with institutions in Europe*

**As of May 2022**

<b>Name of University</b>	<b>Date of Agreement</b>
<b>Polytechnic University of Valencia, Spain</b>	<b>February 2004</b>
<b>University of Hradec Králové, Czech Republic</b>	<b>April 2016</b>
<b>Institute for Large Area Microelectronics, University of Stuttgart, Germany</b>	<b>December 2016</b>
<b>Department of Computer Science, Electrical and Space Engineering, Lulea University of Technology, Sweden</b>	<b>October 2018</b>
<b>Adam Mickiewicz University, Poland</b>	<b>July 2019</b>



# Special Scholarship Program (SSP) for Ph.D Study

---

Exempted from 535,800 JPY/year tuition fee (around 92,588 CZK)

To support living expenses,

150,000 JPY/month is paid for research project work

(around 25,920 CZK )

150,000 JPY for initial costs

(around 25,920 CZK )

**1JPY=0.17CZK**

# Selection

Time of enrollment: April and October

---

## Eligibility

- 35 years old or under at the time of enrollment
- Master's degree holder (to be scheduled to acquired before enrollment date)
- Excellent academic record

Application deadline:

Middle of **March** and **September**



# Short-term Research Support Program

## Eligibility

- International **Master student**
- Staying at KUT for short term with the purpose of research
  - Special research students
  - Research Intern students

## Benefit

- air ticket fee up to 100,000 JPY (around)
- exemption of dormitory up to 3 months

## Non– degree Student exchange program (Bachelor & Master students)

- **Exemption from tuition fees**
- **Accommodation arrangements are supported by KUT**

**【KUT Non–degree Student Exchange website】**

[https://www.kochi-tech.ac.jp/english/admission/non\\_degree/shot-term-program.html](https://www.kochi-tech.ac.jp/english/admission/non_degree/shot-term-program.html)

# Dissertation Assessment Committee Member Invitation System

## **Eligibility**

**Vice advisor or assessment committee member of doctoral students**

## **Benefit**

- **Round trip expenses**
- **Accommodation expenses to engage in up to 7 days activities at KUT**

## **Time of Invitation**

**Once a year**



# Summary

We hope to discuss the cooperation agreement between two universities including

- Research based exchange for master and doctoral students.
  - Ph.D scholarship program
- Non-degree credit exchange programs
- Academic cooperation of faculty members

Thank you

Děkuji